

## 8.5

## TRANSPORT & STORAGE

### OVERVIEW

The transport and storage sector declined by 2.4 per cent in the fourth quarter, compared to growth of 3.8 per cent in the preceding quarter.

For the whole of 2008, the sector grew slower at 3.1 per cent compared to the previous year's growth of 5.0 per cent.

### OVERALL PERFORMANCE

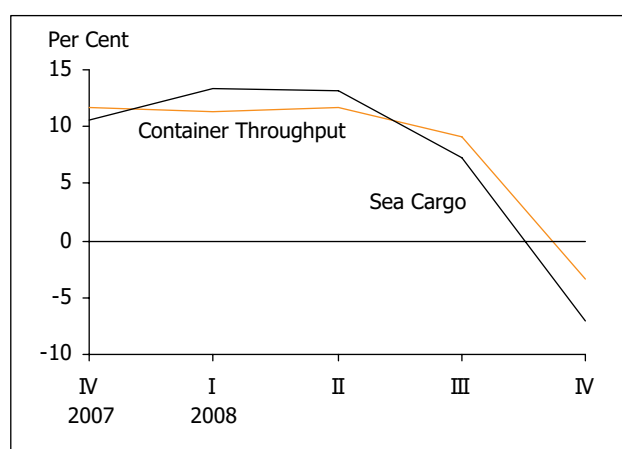
#### Water Transport

Water transport grew slower in 2008 with container throughput growing at 7.1 per cent compared to 13 per cent in 2007 ([Exhibit 8.16](#)). A record of 30 million twenty-foot equivalent units (TEUs) was achieved. Sea cargo grew slower compared to the year before, growing by 6.6 per cent compared to 7.8 per cent in 2007.

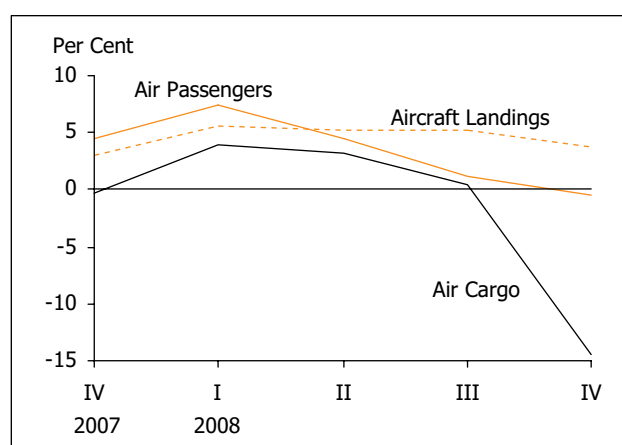
#### Air Transport

In the air transport segment, air passenger growth moderated to 3.0 per cent from 5.5 per cent in 2007 ([Exhibit 8.17](#)). Air cargo handled contracted by 2.0 per cent, sharper than the decline of 0.9 per cent a year ago. Aircraft movements increased by 4.9 per cent over 2007.

**Exhibit 8.16: Changes in Container Throughput and Sea Cargo Handled**



**Exhibit 8.17: Changes in Air Transport**



## Land Transport

As of December 2008, a total of 894,682 vehicles were registered with the Land Transport Authority. These comprised 540,455 cars, 12,391 rental cars, 24,300 taxis, 15,327 buses, 146,120 motorcycles and scooters, and 156,089 goods vehicles and other vehicle types ([Exhibit 8.18](#)).

**Exhibit 8.18: Motor Vehicles Registered**

